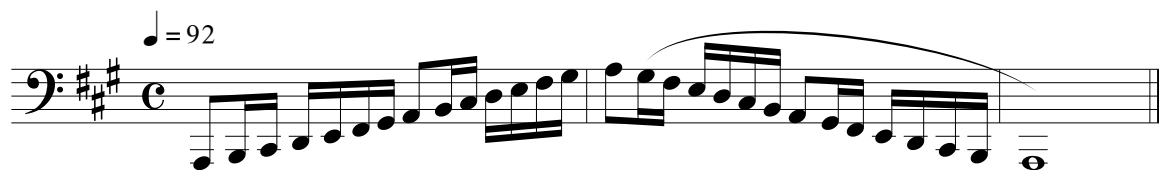


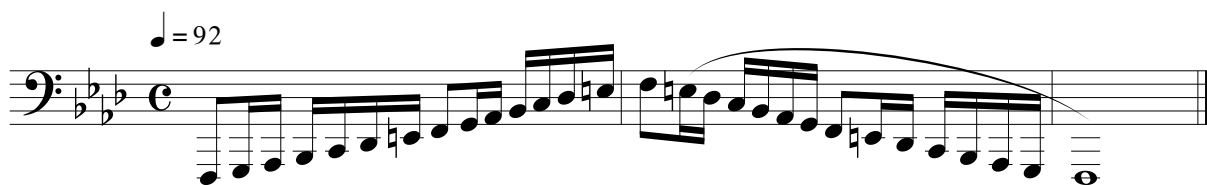
All-State, CSU and NOCO Auditions

Tuba - Set 3A

1. A Major Scale



2. F Harmonic minor scale



3. Full range chromatic (your best low note to your best high note) - eighth notes, mm=104. Play ascending and descending - articulated both up and down.

NOTES:

Metronome markings are recommended TARGETS for students, not REQUIREMENTS. Performing at a slower tempo with greater accuracy and expression may result in a higher score.

Memorization of scales is not required.

4. Audition Excerpt #1 - Pages 22/23 from Performance Studies for Tuba (Sheridan). Published by De Haske
(ASB: Beginning to end of the etude (take 2nd ending - no repeat); CSU/NOCO: Measure 50 to the end of the etude).

1 **Moderato** ♩ = 96

mf *f* *mf*

8

15

21 *ff* *mp sentimental* *ff* *mp* *ff* 2.

30 *mp* *mp*

39 *ff*

46 *sf* *mf* START CSU/ NOCO

52

58

64 END CSU/ NOCO