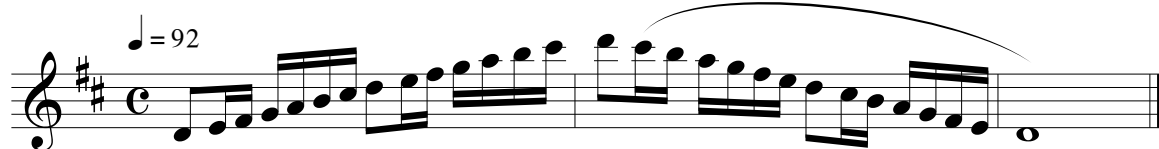


All-State, CSU and NOCO Auditions

Oboe/English Horn* - Set 3A

*All English Horn students **MUST** also audition on oboe. The oboe audition will determine membership in the band and the English Horn double will be determined by the English Horn audition.

1. D Major Scale



2. C Harmonic minor scale

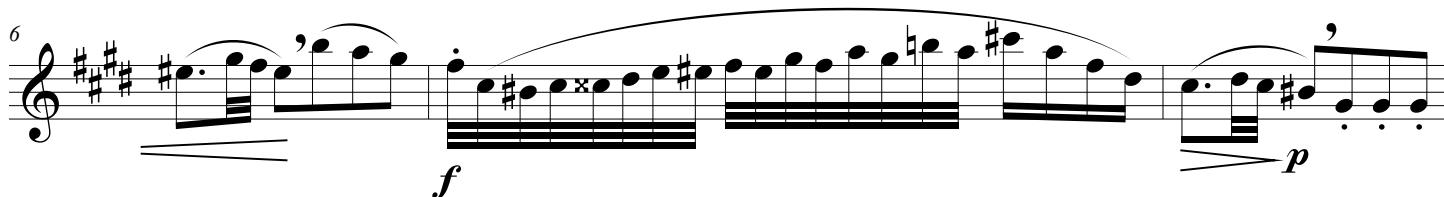
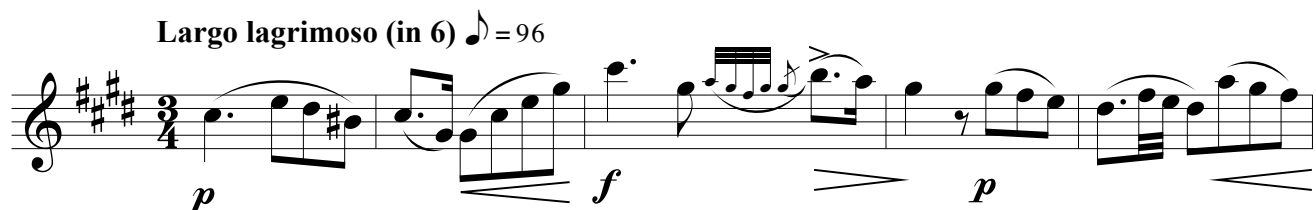


3. Full range chromatic (your best low note to your best high note) - eighth notes, mm=104. Play ascending and descending - articulated both up and down.

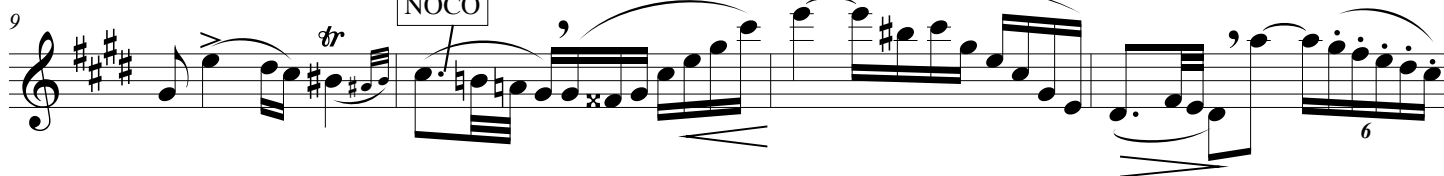
4. Audition Excerpt #1 - Page 41 from Selected Studies for Oboe (Voxman), Published by Rubank.
(ASB: Beginning to end of measure 16; CSU/NOCO: Beginning to downbeat of measure 10)

Largo lagrimoso (in 6) ♩ = 96

START
CSU/
NOCO



END
CSU/
NOCO



5. Audition Excerpt #2 - Page 40 from Selected Studies for Oboe (Voxman), Published by Rubank.
 (ASB: Beginning to end of measure 16; CSU/NOCO: Beginning to end of measure 8)

1 **Allegro poco moderato** ♩ = 100

START
CSU/
NOCO

f

3

5

8 END
CSU/
NOCO

mf

11 *p*

14 *cresc.* *f*

NOTES:

English Horn should not transpose the scales or excerpts - play them as written

Metronome markings are recommended TARGETS for students, not REQUIREMENTS. Performing at a slower tempo with greater accuracy and expression may result in a higher score.

Memorization of scales is not required.