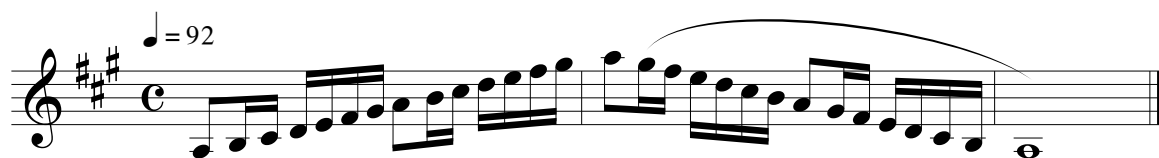


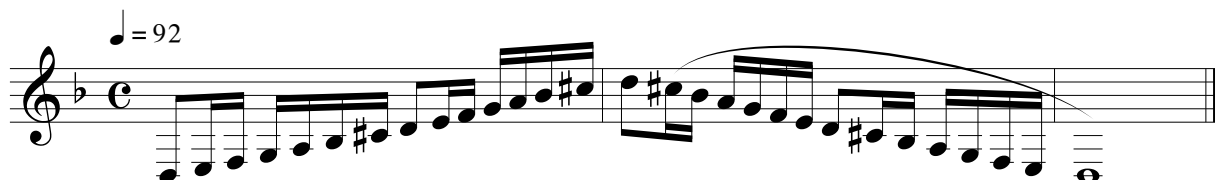
All-State, CSU and NOCO Auditions

Horn in F - Set 3A

1. A Major Scale



2. D Harmonic minor scale



3. Full range chromatic (your best low note to your best high note) - eighth notes, mm=104. Play ascending and descending - articulated both up and down.

4. Audition Excerpt #1 - Page 32, #80 from Preparatory Melodies (Pottag). Published by Belwin Mills (ASB: Beginning to the fermata in measure 16; CSU/NOCO: Beginning to the fermata in measure 16)

Moderato ♩ = 66

START CSU/ NOCO

Musical notation for Audition Excerpt #1 in treble clef, 6/8 time, with a tempo marking of quarter note = 66. The excerpt consists of four staves of music. The first staff starts with a box labeled 'START CSU/ NOCO' and a dynamic marking of *p*. The second staff starts with a measure number '4'. The third staff starts with a measure number '9' and includes dynamic markings of *mf*, *p*, and *f*. The fourth staff starts with a measure number '14' and includes a box labeled 'END CSU/ NOCO'. The music features eighth notes, quarter notes, and half notes with various articulations and dynamics.

NOTES:

Metronome markings are recommended TARGETS for students, not REQUIREMENTS. Performing at a slower tempo with greater accuracy and expression may result in a higher score.

Memorization of scales is not required.

4. Audition Excerpt #2 - Page 31, #79 from Preparatory Melodies (Pottag). Published by Belwin Mills
(ASB: Beginning to the end of the etude; CSU/NOCO: Beginning to the end of measure 8)

Largo di molto (very slow broad sustained) ♩ = 80

1 **START CSU/NOCO** *p* *pp* *cresc.*

8 **END CSU/NOCO** *p* *f*

15 *pp*